

The inside of the building could easily be detailed by adding some card cylinders and narrow piping. You could use an N Scale Laser micro LED to illuminate it – bought from <http://www.nscalelaser.com/shop/n-scale/micro-led/>

Why not send us a picture of your completed model to:  
[simon@nscalelaser.com](mailto:simon@nscalelaser.com)

Don't forget to check out the ever-expanding  
range of N Scale Laser kits!

[www.nscalelaser.com](http://www.nscalelaser.com)

Follow us on Facebook – Ansell Industries

## ANSELL INDUSTRIES

### CRAFTSMAN STYLE MODEL STRUCTURES



**Simplot (N 052)**  
Instruction sheet

Thank you for purchasing this quality precision laser cut kit. We hope you enjoy assembling and painting it as much as we did designing it.

Please read these instructions carefully and fully before starting assembly to familiarise yourself with the parts and method of assembly.



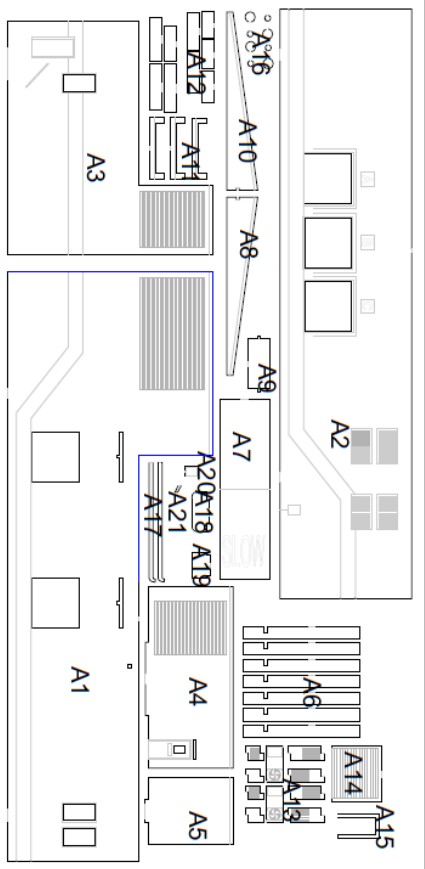
Finished model:  
**410 x 89 x 65mm / 16.14" x 3.5" x 2.56" (W x D x H)**

**Made in the UK**



[www.nscalelaser.com](http://www.nscalelaser.com)

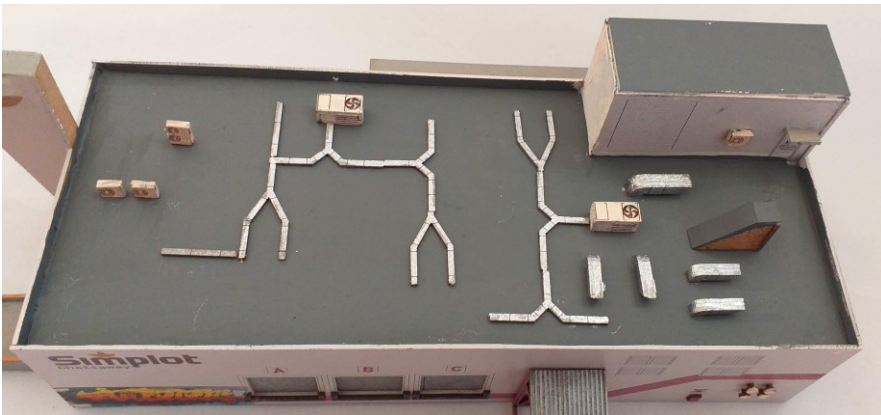
**MDF“A”**



**Blank**

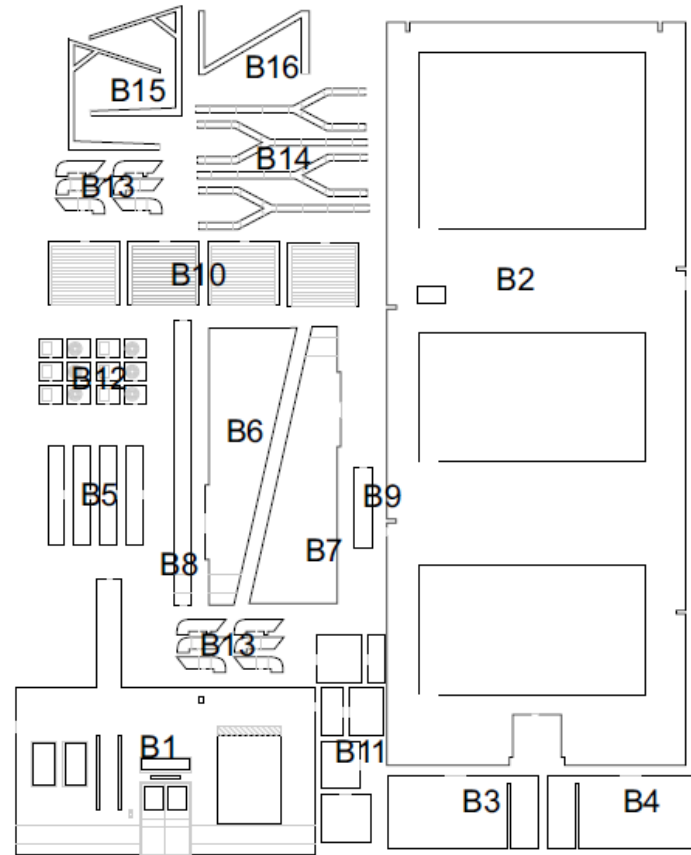


Railserved and rearside view



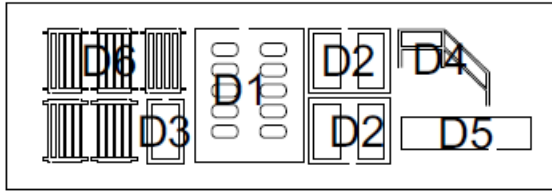
Rooftop detail

MDF"B"



MDF"C"





**Manilla “D”**

*This kit contains 1mm/0.04” laser cut MDF, laser cut oiled manilla card, a glazing sheet and a decal sheet.*

## Assembly

### Recommended Assembly Equipment

- Sharp hobby knife
- Cutting board
- 600 grade wet and dry (Emery) paper
- Small pliers and tweezers
- Engineer’s right-angle
- Straight edge
- Wood glue/ PVA/ Elmers/CA
- Primer and paint
- Elastic bands/ magnetic jig fixture
- Old blunt knife blade/ cocktail stick

We recommend priming the MDF parts while they are still attached to the fret. Sealing the MDF with several light coats of automotive primer will help prevent warping. **WARNING:** use very light coats to prevent the laser scribed detail becoming filled with paint! Test fit all parts prior to gluing – it is easier to address any issues before parts are fitted.

Turning the MDF parts over helps to identify where the fastening tabs are located. Break parts out of the sheet by running a sharp knife over the fastening tabs until the parts are loose. **Do not attempt to push parts out of the frame as this will damage the part.**

### Structure

### Main building

Remove B2 and A6 (6 pieces)

A20 attaches over the rectangular etch in side A2 beneath the grills – this is a service cupboard.

Use A16 to form a gas vent, glue the smaller part in the center of the larger part and attach the smaller part to an outside wall (x4).

Paint D6 (x5) and place over the windows. A coat of rust weather powder is advised prior to fastening to the building.

Use A13 to make the air handling units for the roof. B14 and C9 can be used as ducting to take the air from the handlers into the building.

B12, C6 and C7 are small wall mounted air conditioning units. These are typically for smaller spaces such as the offices. They can also be placed on the roof if desired.

B13 can be fastened together to form air extractors. These should be placed on the roof as appropriate.

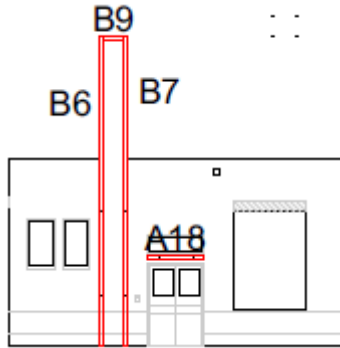
A16 – mount the smaller part centrally behind the larger part – these are gas extractors for the plant room, though could be mounted close to the grills on the sidewall too.

Roof access. Use 2x C5, A15 and D5 to the rooftop access stairway cover.

Open store. Use B15, B16 and C3 to form the open store/ smokers corner. Fasten B16 to end pieces B15 and cover with C3 – ensure the corrugations are running down

## Decalling

The decals supplied with the kit are the standard waterslide type. Trim around the decal with a knife or scissors, place in warm water for 10 seconds, remove and place on the area to be decaled and carefully slide backing paper away. Remove any excess water with a lint free cloth. **DO NOT USE MICROSOL.** A clear matt varnish may be used to help blend the differing finishes once the decal is thoroughly dry



Frontage can now be added to the building. Remove B6, B7 and B9. And attach as shown. Add B8 to the front between B6 and B7.

Now is a good point to consider painting the outside of the structure if using spray paint.

Stack parts B11 to form a flight of stairs for inside the front door, sandwiched between B3 and B4. Mount sufficiently far back to allow the doors to open (and to allow access to glaze behind the door windows).

Carefully remove the three access plates in the building floor and place to one side.

Place doors B10 & A14 into the voids in the two side walls from the inside – paint before inserting. Repeat with D1 in the front face.

The three sided by side doors are intended as trucking service bays and A11 (x3) are trailer bumpstops. Mount these below the door opening.

Remove D2 and place behind the two double windows and D3 behind the single window by the rear fire escape door.

Use the glazing sheet to glaze all windows and doors.

Use leftover scraps

Use parts A12 to form a staircase for the fire escape door on the rear face. Use D4 to form a handrail for the staircase.

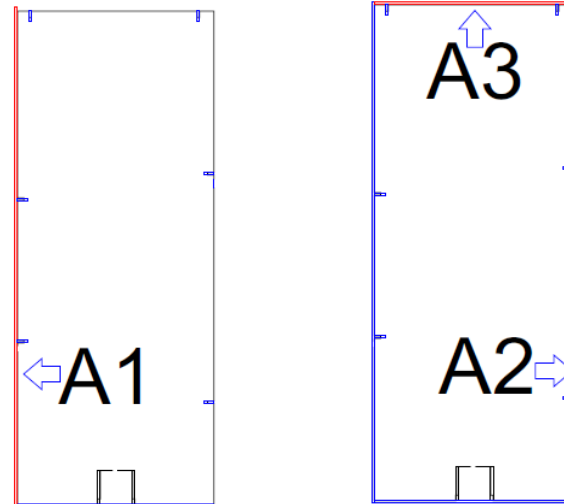
C4 fastens into the slots over the doors in the side face.

Use A1 (x3) as truck trailer bump stops below the three access doors on A2.

Remove parts A7- A10, fasten the tab of A9 into the slots on A8 and A10 and place A10 over the top, resting on A9. Ensure the upper edge of A10 is flush with the edge of A8 and A10. File the excess off A10 once the assembly is dry.

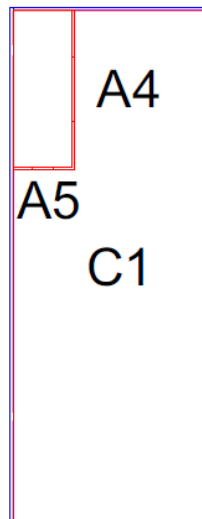
Attach water spouts A17 underneath the square cutouts in A1 and B1

Remove A1 and mount onto the building assembly, take care to ensure that the wall edges are aligned between B1 and A1 and that the lower edge of A1 aligns with the assembly floor standoffs.



Now remove A3 and A2 and fasten to the assembly, ensuring the bottoms sit square.

Remove roof C1 and fit into the top. Rest on the tops of the A6, B3 and B4.



A5 and A4 can be removed and fitted into the slots in C1.

Glaze the window in the door of A4 using a small square cut from the glazing sheet.

Remove B5 (x4) and mount 2 each on A1 and A4 in the service room void.

